



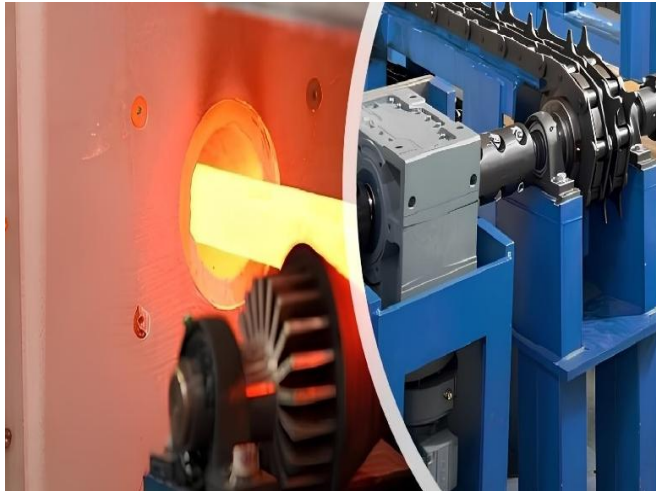


KFS Metal is a global engineering and manufacturing company providing high-technology production machines and customized engineering solutions for the steel pipe industry. By combining advanced engineering expertise with extensive industry experience, we deliver environmentally friendly, energy-optimized, efficient, sustainable, and long-service life systems. In addition, KFS Metal provides technical consultancy services including, process optimization, capacity expansion, modernization projects, and greenfield investments.

**Mission:** Enhancing the operational efficiency and productivity of welded steel pipe manufacturers through engineering expertise and experience.

**Vision:** Strengthening our position in the global steel pipe industry.

**Values:** Driven by knowledge and experience, focused on innovation, prioritize building trust.



.Restoration of ductility and toughness in cold-worked metals, enabling further processing without cracking or fracture. Our annealing furnaces are capable to perform various types of heat treatment, including process annealing, stress relieving and annealing at normalizing temperature.

.High energy efficiency through induction heating technology, which transfers energy directly and rapidly to the workpiece without requiring fossil fuels.

.Fully automated systems capable of annealing both round pipes & profile sections with reduced labor requirements and optimized production costs.

.Compared to conventional tunnel-type heat treatment furnaces, the system provides significantly shorter start-up, shutdown, and size changeover times, enabling flexible small-batch production with high operational efficiency.

.Complete control over quality issues that are critical in terms of standards.

## Technical Features

Working Style: Fully Automatic

Size Range: 1/2" - 6"

Pipe Length: 6,0 to 12,0 m

Annealing Temperature: 650 °C to 920 °C

.Our high-technology **Hot-Dip Galvanizing Plants** are custom-engineered to meet specific production requirements and deliver maximum operational efficiency.

.Fully automated operation covering chemical surface preparation, extraction system, size changeover, monitoring and recording of production parameters.

.High-performance production lines designed for maximum efficiency, uninterrupted production, optimized energy consumption, and extended service life.

.KFS Metal's advanced "**Induction Pre-heating and Drying System**" offers an eco-friendly, high energy efficient, compact plant layout, user-friendly operation.

.Our production lines can process both pipes and profiles.

.Thin and homogeneous zinc coating in compliance with EN 10255, ISO 65M, ASTM-A, BS 1387, ANSI C80.1, and DIN 2440 standards. "**The Zinc Consumption Control System**" developed by KFS Metal enables real-time monitoring and control of zinc consumption during the galvanizing process.

## Technical Features

Working Style: Fully Automatic

Production Capacity: 6,0 – 9,0 tons per hour

Dimensional Range: 1/2" to 6"

Pipe Length: 5,0 to 7,5 m

Fuel Type: Natural Gas/LPG





Today, "**Batch Hot-Dip Galvanizing (HDG)**" and "**Continuous Galvanizing (CGR)**" are different two methods used for zinc coating of rebars. However, the low efficiency in batch galvanizing causes an increase in product costs. On the other hand, since there is no metallurgical bond between the base metal and the coating layer, corrosion protection is insufficient in the continuous galvanizing. KFS Metal has developed and implemented the new generation "**Hot Dip Rebar Galvanizing Plant (CHDG)**" which is suitable for mass production flow, enables the galvanized rebars with high corrosion resistance.

## Technical Features

Working Type: Fully Automatic

Quality Standards: ASTM A 767, EN 10348-2, ISO 14657

Production Capacity: 4,0 to 6,0 tons per hour

Nominal Diameter: 12 – 50 mm (European rebar size chart)

Material Length: 6,0 – 12,0 m

Fuel Type: Natural Gas/LPG

# Powder Epoxy Painting Lines

Recently, epoxy-based powder painting applied by the electrostatic method has become quite common in especially fire protection systems for temporary protection against corrosion. Powder epoxy coating is extremely durable, and can protect a surface from chipping, wear and corrosion. In addition, epoxy-based powder painting is much more decorative, and longer lasting than water-based painted steel pipes. KFS Metal produces turnkey **Powder Epoxy Painting Lines** with high technology and quality level.

## Technical Features

Working Style: Fully Automatic

Dimensional Range: 1/2" to 12"

Pipe Length: 6,0 to 12,0 m

Coating Thickness: 50 – 150  $\mu\text{m}$

Quality Standards: EN 10255, ASTM A 53,  
ASTM A 795 Sch. 10, 40





KFS Metal, with its extensive knowledge and experience, successfully produces **Painting Lines** with high technology and quality standards that allow steel pipes and profiles to be coated with varnish, alkyd primer or water-based paint to protect them against atmospheric corrosion. Our high-speed and efficient painting lines are designed as "multi-path" systems where more than one pipe can be processed simultaneously. Painting lines developed according to customers' needs, are produced as turnkey solutions, including installation, commissioning, training and after-sales support.

## Technical Features

Working Style: Fully Automatic

Dimensional Range: 1/2" to 6"

Pipe Length: 4,0 to 12,0 m

Paint Types: Varnish, Alkyd Primer, Water-Based Paint

# Straightening, End Facing, Hydrotest, & Packaging

With its extensive knowledge and experience, KFS Metal successfully produces turnkey steel tube straightening machines, chamfering, high pressure multi-head hydro-testing and packaging machines designed to work in line with high speed and quality standards. Our machines are fully automated and compatible with pipe mills that require high production speeds.

## Technical Features

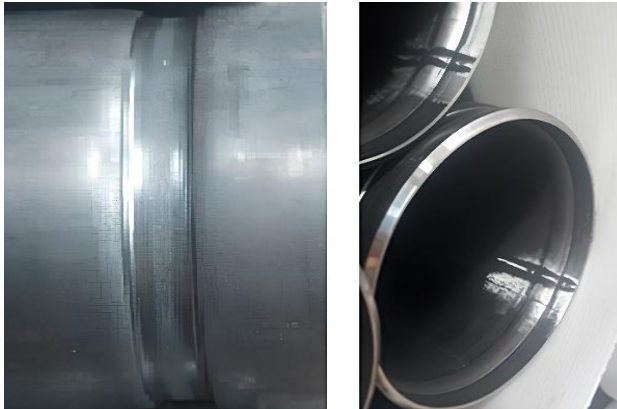
Working Style: Fully Automatic

Diameter Range: 1/2" - 6"

Wall Thickness: 2,0 - 7,0 mm

Pipe Length: 6,0 - 12,0 m





Roll grooved steel pipe systems, which enable fast, reliable, and weld-free installation, are widely used in FM-approved fire protection & sprinkler systems. Leveraging extensive industry knowledge and engineering expertise, KFS Metal designs and manufactures high-capacity **Grooved Pipe Production Lines** covering pipe sizes from 3/4" to 12". Our advanced production lines are developed to deliver high productivity, precision and continuous operation. All systems are supplied as turnkey solutions including manufacturing, installation, commissioning, training, and after-sales technical support services.

You can have many advantages in your facility with the fully automatic **Double Head Drift Test Lines** that cover all sizes between 2 3/8" and 10 3/4" for the internal diameter control of API 5CT tubing and casing oil drilling pipes. Our high-speed test lines, which operate in closed circuit, are designed to be integrated into production lines with limited space requirement.

## Technical Features

Working Type: Fully Automatic  
Material Grade: API 5CT J55, K55  
Diameter Range: 2 3/8" - 10 3/4"  
Pipe Length: 6,0 - 12,5 m



# ERW Production Equipment & Tools



KFS Metal manufactures the following equipment and apparatus used in the ERW pipe production & welding process for 1/2"-12" sized pipe and profiles;

- Induction coils with epoxy coating and holders
- Internal mechanical deburring equipment
- Jute Wrapping Machine
- Forming, welding and sizing rolls group used in HFI pipe welding machine
- On-line automatic pipe lubrication system
- Complete eddy current testing lines



KFS Metal, provides advanced engineering and investment consultancy services for companies in the steel pipe industry, expanding existing production capabilities, executing modernization programs, or establishing new manufacturing facilities. In addition to core engineering advisory, our consultancy scope covers feasibility, CAPEX investment planning, machinery & equipment specification development, supplier qualification and evaluation, value-added product strategy, plant layout and material flow design. KFS Metal also specializes in process optimization consultancy, aimed at increasing production efficiency, improving yield, reducing operational losses, and maximizing profitability. Our programs are supported by theoretical technical training and practical field applications, ensuring that engineering decisions are effectively translated into real production performance. We would be pleased to collaborate on the following projects:

- ERW Steel Pipe and Tube Manufacturing Plants
- API 5L / API 5CT Line Pipe Production Facilities
- Spiral Welded Pipe Manufacturing Plants
- Steel Pipe Manufacturing Technologies

**KFS Metal Makina San. Tic. A.Ş.**

<http://www.kfsmetalinc.com>

[kahramansirin@kfsmetalinc.com](mailto:kahramansirin@kfsmetalinc.com)

Phone: + 90 (533) 394 49 48

Yahyakaptan, Dođal Sok. No:4, 41050, Kocaeli - Turkey